

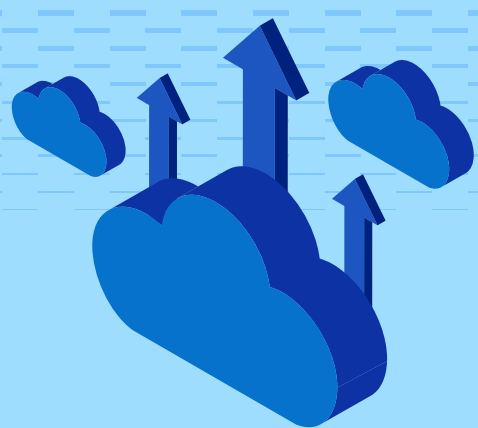
Turbocharge Your Way to AI

Dell AI Factory with NVIDIA

Launch into the AI era with tailored solutions from seasoned partners

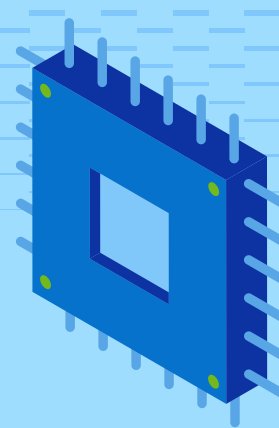


Accelerate AI adoption



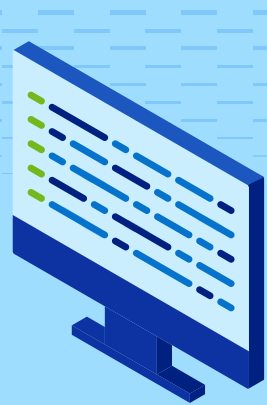
Together

we deliver the world's broadest GenAI solutions portfolio from desktop to data center to cloud to edge.



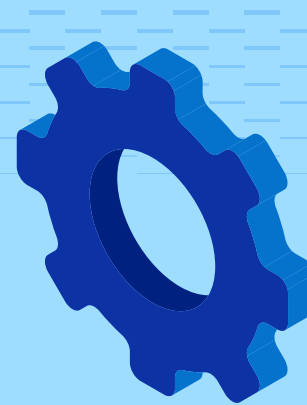
75%

more cost-effective inferencing than public cloud Infrastructure-as-a-Service (IaaS)¹



86%

faster time to value via turnkey, full-stack solutions with services²

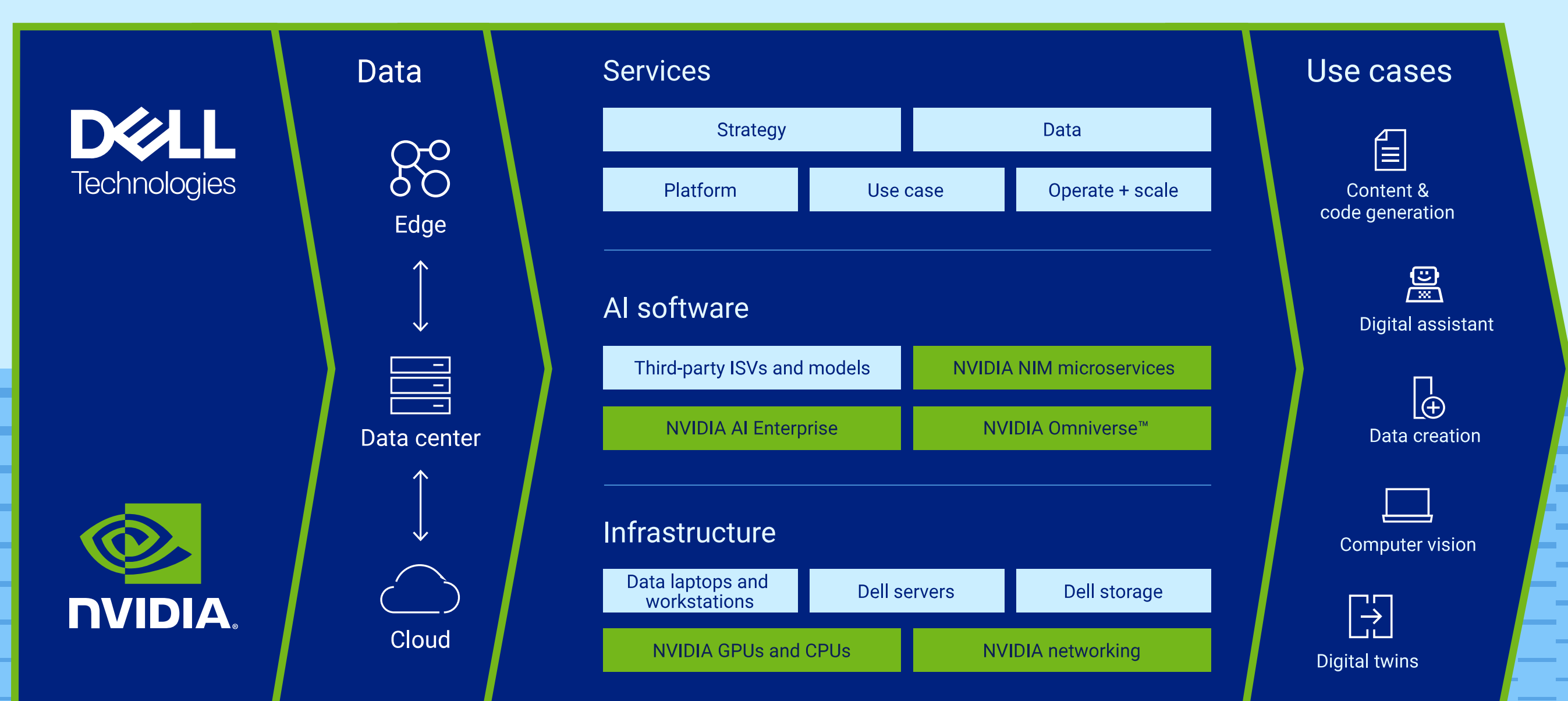


25 years

of joint innovation between Dell Technologies and NVIDIA®

Adopt the industry's first end-to-end enterprise AI solution³

Validated and turnkey AI/GenAI solutions with expert services help you achieve outcomes faster.



AI services

Dell Services accelerate outcomes by aligning business objectives with the right solutions.

- Advisory Services**
 - Establish your AI strategy.
 - Identify and prioritize your use cases.
- Data Preparation Services**
 - Prepare data for AI models.
- Implementation Services**
 - Design your platform.
 - Deploy and test models.
- Managed Services**
 - Operate and scale.

AI software

NVIDIA AI Enterprise is the operating system for AI.

- Streamline development and deployment of production-grade AI/GenAI applications.
- Optimize model performance with NIM microservices and transition smoothly to production with industry-standard APIs.
- Confidently build and run models with a secure software lifecycle, end-to-end manageability and enterprise support.

AI-optimized infrastructure

The desktop-to-data center Dell AI portfolio with NVIDIA technologies gives you the flexibility to run your AI/GenAI workloads anywhere.

- Dell laptops and workstations**
Develop and fine-tune GenAI models locally.
- Dell PowerEdge servers with NVIDIA GPUs**
Accelerate demanding AI and GenAI workloads.
- Dell ECS and PowerScale storage**
Access, train, fine-tune and drive AI without limitations.
- NVIDIA Spectrum™-X / InfiniBand® networking**
Boost performance of large-scale GenAI networks.

Fast-track your AI adoption from the desktop to data center to cloud to edge. Integrated Dell and NVIDIA capabilities accelerate your AI-powered use cases, integrate your data and workflows and enable you to design your own AI journey for repeatable, scalable outcomes.

Find out how Dell Technologies and NVIDIA unlock the full potential of AI and GenAI.

Dell.com/NVIDIA-AI



¹ Based on Enterprise Strategy Group research commissioned by Dell comparing on-premises Dell infrastructure versus native public cloud IaaS, April 2024. Analyzed models show a 7B parameter LLM leveraging RAG for an organization of 5K users being up to 38% more cost effective while a 70B parameter LLM leveraging RAG for an organization of 50K users being up to 72% more cost effective. Actual results may vary.
² Estimate based on Dell analysis in May 2024 comparing time to set up a two-node Kubernetes® cluster for a general-purpose LLM using automated scripts vs deploying a common design manually. Setup time includes base installation only. Actual setup time will vary depending on solution configuration.
³ Based on Dell analysis, July 2024. Dell offers solutions with NVIDIA hardware and software engineered to support AI workloads from PCs with AI-powered features and workstations to servers for high performance computing, data storage, cloud-native software-defined infrastructure, networking switches, data protection, HCI and services.
 Copyright © 2024 Dell Inc. or its subsidiaries. All Rights Reserved. Dell and other trademarks are trademarks of Dell Inc. or its subsidiaries. NVIDIA®, Omniverse®, Spectrum™-X, and InfiniBand® are trademarks and/or registered trademarks of NVIDIA Corporation in the U.S. and other countries. Kubernetes® is a registered trademark of The Linux Foundation. Other trademarks may be the property of their respective owners. Published in the USA 12/24 Infographic.
 Dell Technologies believes the information in this document is accurate as of its publication date. The information is subject to change without notice.